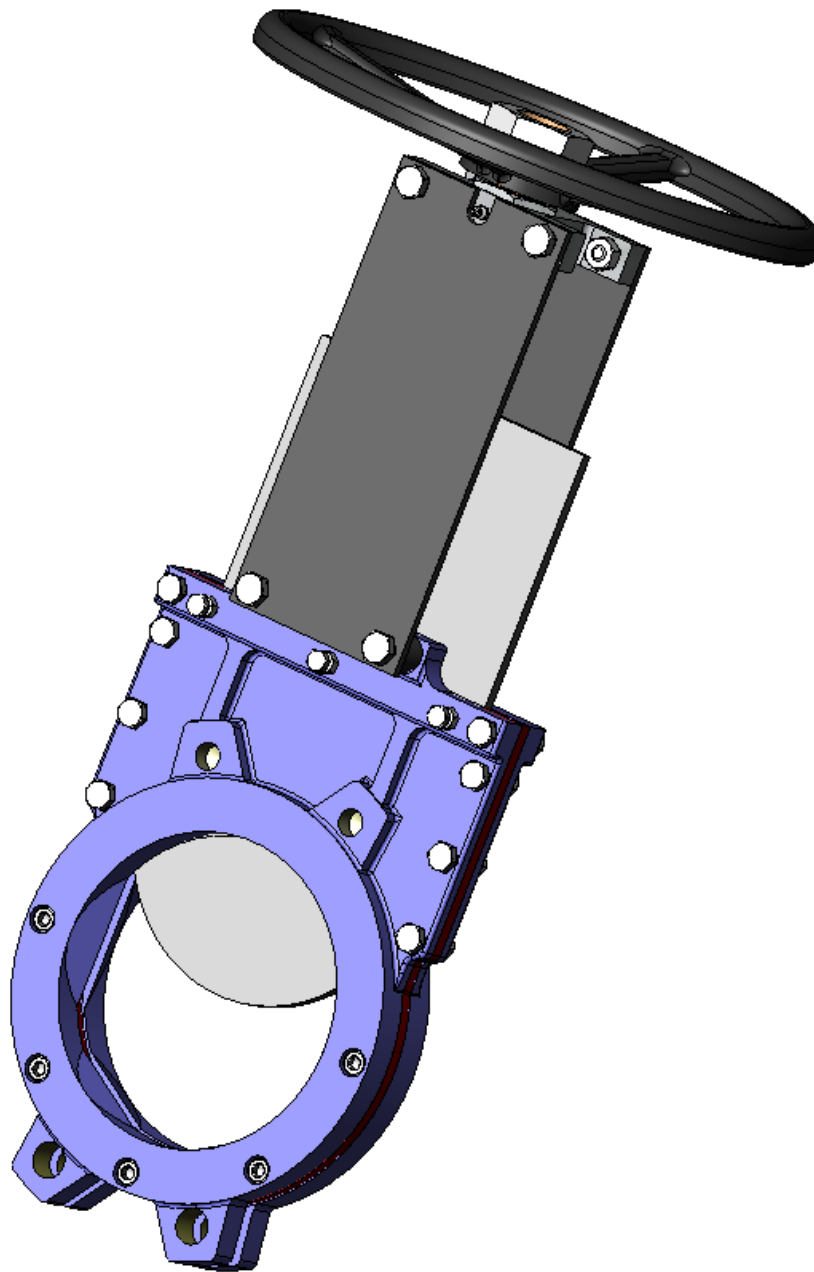


# VALVULAS DE GUILLOTINA SERIE – UB

PROGRAMA DE FABRICACION

## KNIFE GATE VALVES UB – SERIES

FABRICATION RANGE



### - UTILIZACION:

Válvula de tajadera bidireccional extraplana, para productos líquidos cargados con sólidos blandos.  
Aplicación principal: tubería en línea, entre bridas.

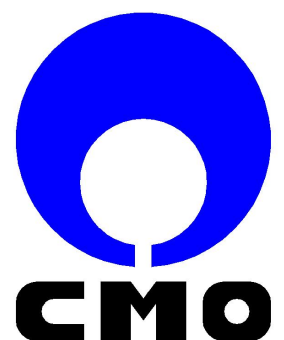
### - UTILIZATION:

Extra-flat bidirectional knife gate valve, for liquid products mixtured with soft solids.  
Main application: pipe in line, between flanges.

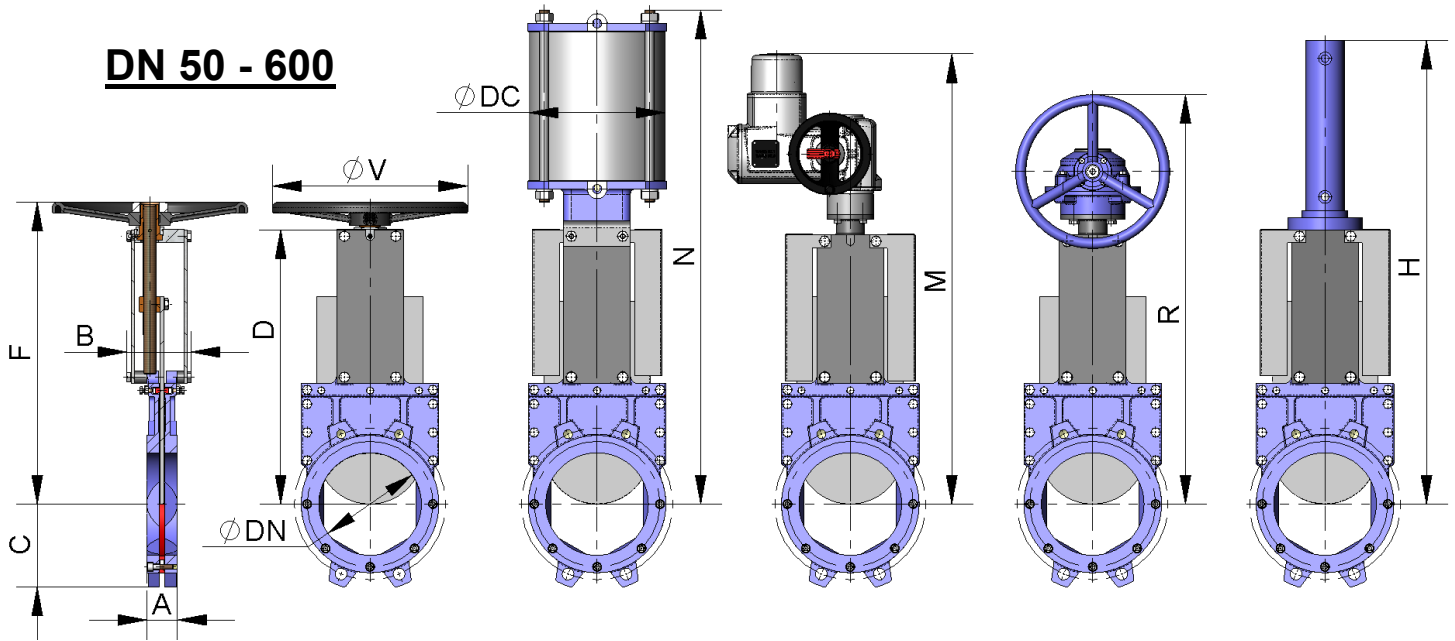


GESTION DE  
LA CALIDAD  
CERTIFICADA

QUALITY  
MANAGEMENT  
CERTIFIED



# DN 50 - 600



DN	ΔP (Kg/Cm <sup>2</sup> )	TIRO (NW)	PAR (Nm)	DIMENSIONES / DIMENSIONS										
				A	B	C	D	F	ØV	M	R	N	DC	H
50	10	1.184	2,7	43	101	66	241	281	225	609	515	417	80	435
65	10	2.000	4,6	46	101	73	268	306	225	636	542	459	80	477
80	10	3.026	7	46	101	96	292	331	225	660	566	498	100	529
100	10	4.724	11	52	101	105	324	363	225	692	598	565	125	582
125	10	7.385	17	56	111	119	362	401	225	730	636	634	160	653
150	10	10.633	25	56	111	137	412	451	225	780	686	721	200	738
200	10	18.912	55	60	130	162	525	578	380	893	799	965	250	924
250	10	29.546	85	68	130	194	626	687	380	966	900	1.128	300	1.086
300	10	42.604	123	78	130	219	726	779	380	1.066	1.000	1.296	350	1.236
350	6	34.895	136	78	320	251	882	---	---	1.068	1.156	1.502	350	1.442
	10	58.051	226					---	---	1.071	1.156	1.527	400	1.463
400	6	45.561	178	102	320	280	982	---	---	1.168	1.256	1.677	400	1.592
	10	75.806	296					---	---	1.171	1.331	1.710	500	1.633
450	6	57.754	226	114	320	306	1.082	---	---	1.271	1.356	1.827	400	1.768
	10	96.090	430					---	---	1.315	1.549	1.870	585	1.783
500	6	71.304	320	127	320	345	1.190	---	---	1.379	1.539	2.007	450	1.946
	10	118.638	531					---	---	1.423	1.657	2.028	585	1.946
600	6	102.961	569	154	320	403	1.385	---	---	1.618	1.852	2.328	585	2.241
	10	171.112	943					---	---	1.618	1.821	---	---	2.293

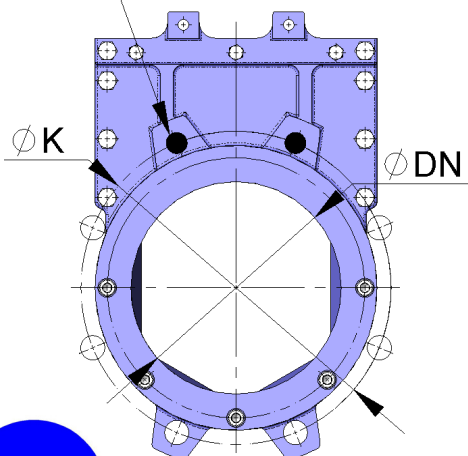
OBSERVACIONES: Otros tamaños bajo consulta. / NOTE: Other sizes under request.

Cotas y dibujos sin compromiso. CMO S.L. se reserva, en cualquier momento, el derecho de modificarlos a discreción y sin previo aviso.

Dimensions and drawings without obligation. CMO S.L. reserves, at any moment, the right of their modification at its own discretion and without any previous notice.

Profundidad de rosca P  
Screw depth P

- → Agujeros ciegos / Tapped holes
- → Agujeros pasantes / Through holes

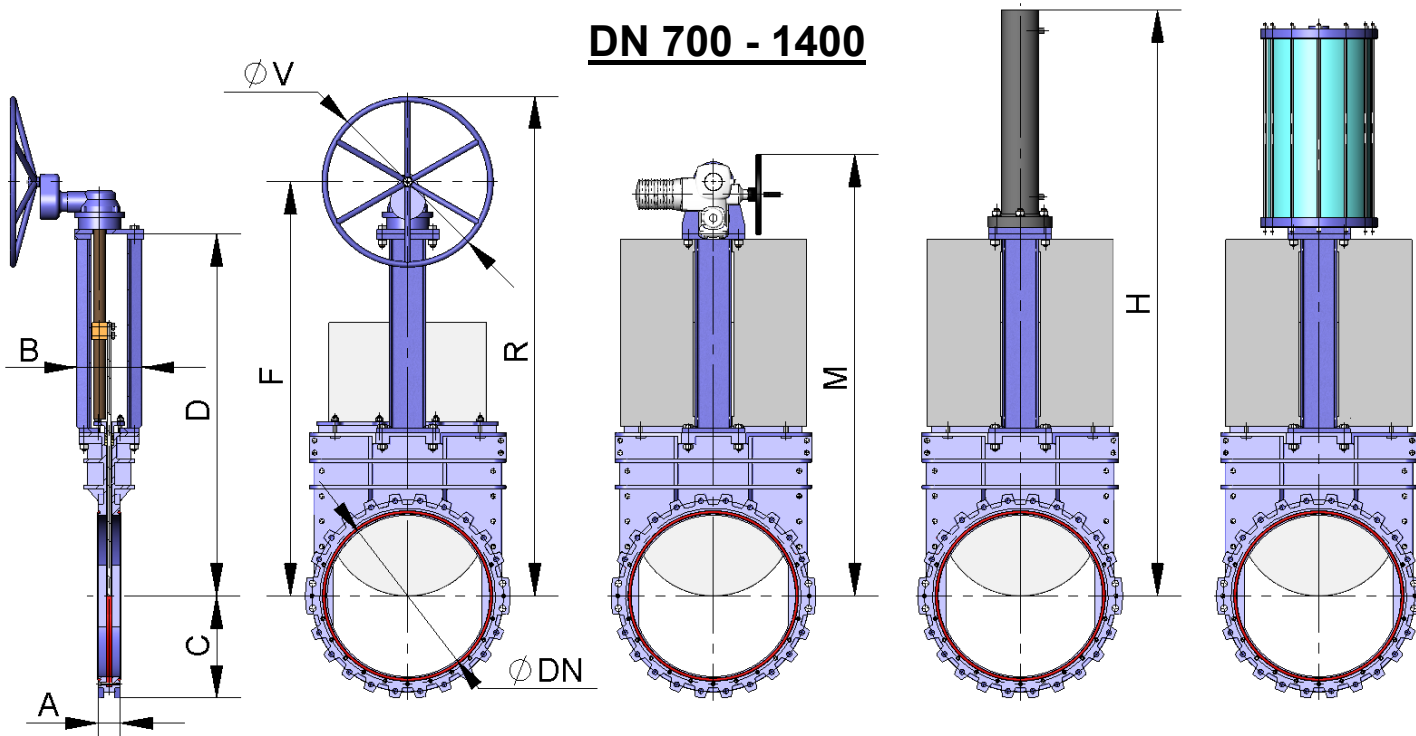


DN	TALADRADO DE BRIDAS / BORING JOINT									
	DIN PN-10					ANSI-150				
	●	○	M Métrico	P	ØK	●	○	R UNC	P	ØK
50	2	2	M 16	9	125	2	2	5/8"	9	120,6
65	2	2	M 16	9	145	2	2	5/8"	9	139,7
80	2	6	M 16	11	160	2	2	5/8"	11	152,4
100	2	6	M 16	12	180	2	6	5/8"	12	190,5
125	2	6	M 16	12	210	2	6	3/4"	12	215,9
150	2	6	M 20	14	240	2	6	3/4"	14	241,3
200	2	6	M 20	14	295	2	6	3/4"	14	298,4
250	4	8	M 20	14	350	4	8	7/8"	14	361,9
300	4	8	M 20	14	400	4	8	7/8"	14	431,8
350	6	10	M 20	20	460	4	8	1"	20	476,2
400	6	10	M 24	21	515	6	10	1"	21	539,7
450	8	12	M 24	22	565	6	10	1 1/8"	22	577,8
500	8	12	M 24	22	620	8	12	1 1/8"	22	635
600	8	12	M 27	22	725	8	12	1 1/4"	22	749,3

OBSERVACIONES: Otros tamaños bajo consulta. / NOTE: Other sizes under request.



## DN 700 - 1400



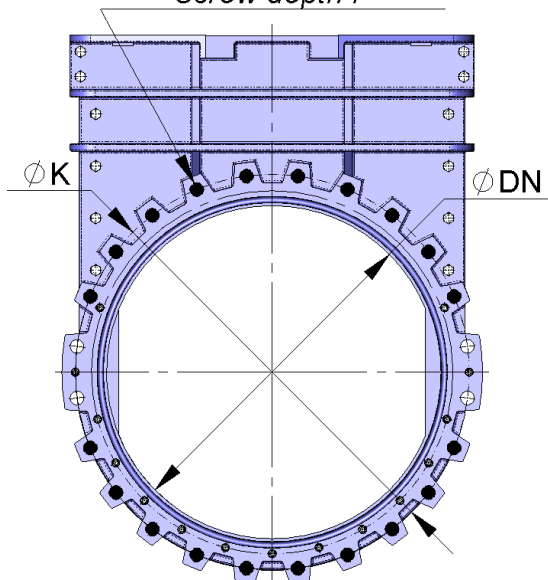
DN	ΔP (Kg/Cm <sup>2</sup> )	TIRO (NW)	PAR (Nm)	DIMENSIONES / DIMENSIONS								
				A	B	C	D	M	F	ØV	R	H
700	4	93.863	521	165	320	446	1524	1847	1651	650	1976	2447
	6	140.417	777					1850	1651	850	2076	2499
	10	233.152	1.525					1876	1785	650	2110	2541
800	4	122.749	681	190	320	506	1718	2046	1850	850	2275	2793
	6	183.596	1.206					2049	1984	450	2209	2793
	10	305.290	2.316					2113	2022	850	2447	2835
900	4	155.952	1.030	203	320	560	1950	2281	2216	450	2441	3130
	6	232.947	1.533					2307	2216	650	2541	3172
	10	386.288	2.929					2345	2254	1000	2754	3190
1.000	4	192.492	1.471	216	320	614	2176	2533	2442	650	2767	3511
	6	287.544	2.189					2571	2480	850	2905	3553
	10	477.636	4.060					2589	2516	850	2941	3594
1.200	4	278.676	2.394	254	350	726	2653	3053	2962	850	3387	4230
	6	416.811	3.572					3053	2998	850	3423	4271
	10	690.658	6.691					3071	3016	1000	3516	4305
1.400	4	381.308	3.736	279	350	835	3122	3522	3467	850	3892	4917
	6	569.430	5.559					3540	3485	850	3910	4972
	10	942.266	10.867					3426	3335	1350	4010	5010

**OBSERVACIONES: Otros tamaños bajo consulta. / NOTE: Other sizes under request.**

Cotas y dibujos sin compromiso. CMO S.L. se reserva, en cualquier momento, el derecho de modificarlos a discreción y sin previo aviso.

Dimensions and drawings without obligation. CMO S.L. reserves, at any moment, the right of their modification at its own discretion and without any previous notice.

### Profundidad de rosca P Screw depth P

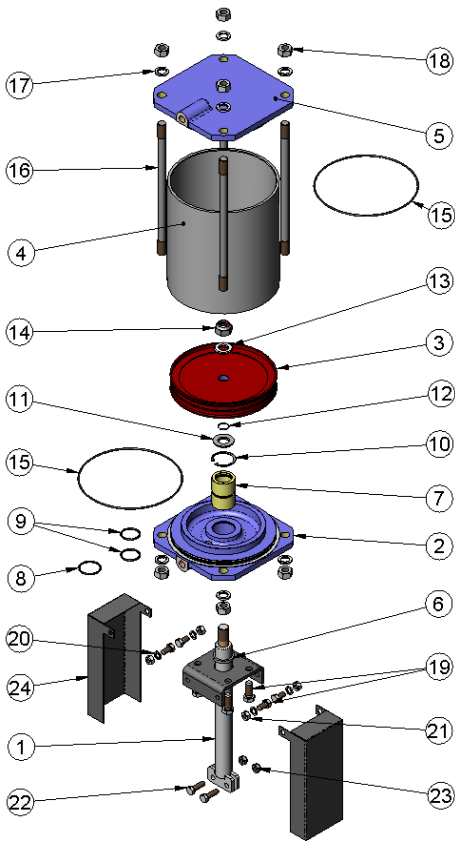


- → Agujeros ciegos / Tapped holes
- → Agujeros pasantes / Through holes

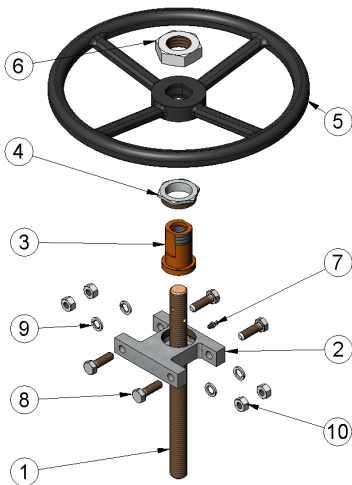
DN	TALADRADO DE BRIDAS / BORING JOINT									
	DIN PN-10					ANSI-150				
	●	○	M Métrico	P	ØK	●	○	R UNC	P	ØK
700	20	4	M 27	23	840	20	4	1 1/4"	23	863,6
800	20	4	M 30	23	950	24	4	1 1/2"	23	977,9
900	24	4	M 30	23	1050	28	4	1 1/2"	23	1085,9
1.000	24	4	M 33	23	1160	32	4	1 1/2"	23	1200,2
1.200	28	4	M 36	30	1380	40	4	1 1/2"	30	1422,4
1.400	32	4	M 39	30	1590	44	4	1 3/4"	30	1651

**OBSERVACIONES: Otros tamaños bajo consulta. / NOTE: Other sizes under request.**

# ACTUADORES / ACTUATORS

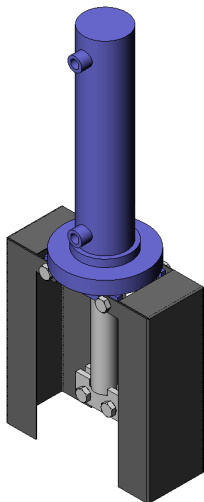


NEUMATICO / PNEUMATIC		
POS.	DESCRIPCION / DESCRIPTION	MATERIAL
1	VASTAGO / STEM	AISI-304
2	TAPA SOPORTE / CYLINDER HEAD	ALUMINIO / ALUMINIUM
2	Ø CAMISA / CYLINDER > Ø200 →	GGG 40
3	EMBOLO / PISTON	S275JR + EPDM
4	CAMISA / CYLINDER TUBE	ALUMINIO / ALUMINIUM
5	TAPA SUPERIOR / CYLINDER CAP	ALUMINIO / ALUMINIUM
5	Ø CAMISA / CYLINDER > Ø200 →	GGG 40
6	RASCADOR / SCRAPER	NITRILO / NITRILE
7	CASQUILLO / SOCKET	NYLON
8	ANILLO TORICO EXTERIOR / OUTSIDE O-RING	NITRILO / NITRILE
9	ANILLO TORICO INTERIOR / INSIDE O-RING	NITRILO / NITRILE
10	CIR-CLIP	ACERO / STEEL
11	ARANDELA / WASHER	ST ZINC
12	ANILLO TORICO / O-RING	NITRILO / NITRILE
13	ARANDELA / WASHER	ST ZINC
14	TUERCA AUTOBLOCANTE / SELF-LOCKING NUT	5.6 ZINC
15	ANILLO TORICO / O-RING	NITRILO / NITRILE
16	TIRANTES / TIE ROD	F-114 ZINC
17	ARANDELA / WASHER	ST ZINC
18	TUERCA / NUT	5.6 ZINC
19	TORNILLO / SCREW	5.6 ZINC
20	ARANDELA / WASHER	ST ZINC
21	TUERCA / NUT	5.6 ZINC
22	TORNILLO / SCREW	A-2
23	TUERCA AUTOBLOCANTE / SELF-LOCKING NUT	A-2
24	PROTECCION / PROTECTION	S275JR

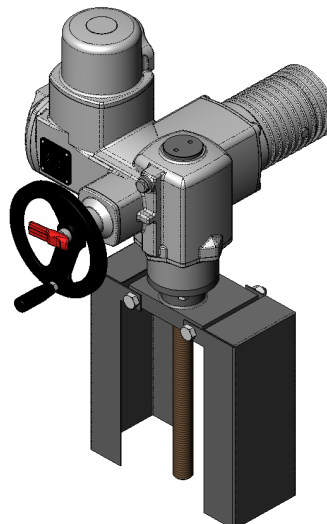


VOLANTE / HANDWHEEL		
POS.	DESCRIPCION / DESCRIPTION	MATERIAL
1	HUSILLO / SPINDLE	AISI-303
2	PUENTE / YOKE	GG25
3	TUERCA HUSILLO / SPINDLE NUT	BRONCE / BRONZE
4	TUERCA TOPE / BUTT NUT	F-111
5	VOLANTE / HANDWHEEL	GGG 40
6	TUERCA SUPERIOR / SUPERIOR NUT	5.6 ZINC
7	ENGRASADOR / GREASER	ACERO / STEEL
8	TORNILLO / SCREW	5.6 ZINC
9	ARANDELA / WASHER	ST ZINC
10	TUERCA / NUT	5.6 ZINC

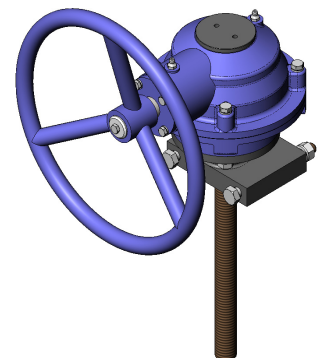
**HIDRAULICO**  
HYDRAULIC



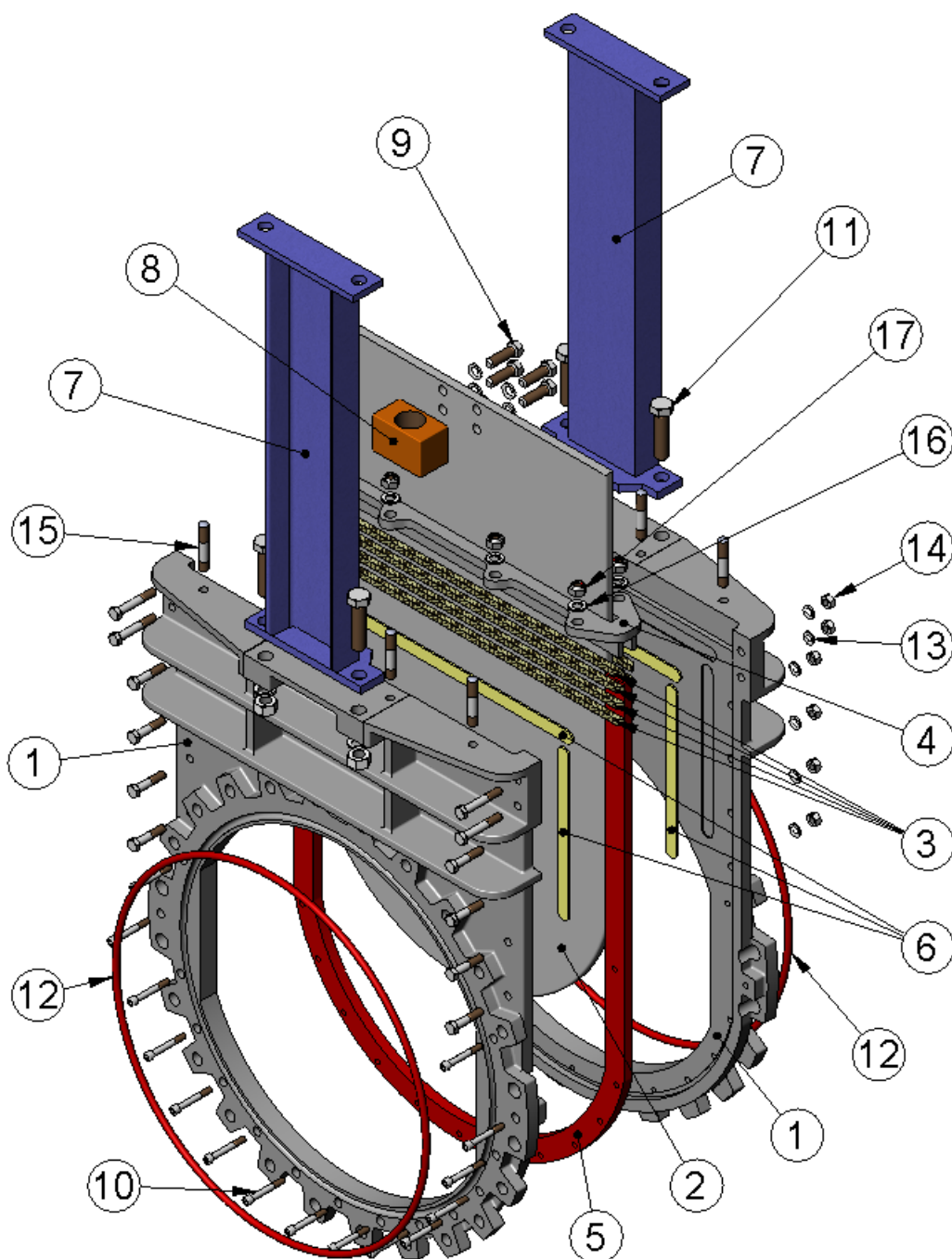
**MOTOR / MOTOR**



**REDUCTOR**  
SPUR GEAR



# DN 700 - 1400



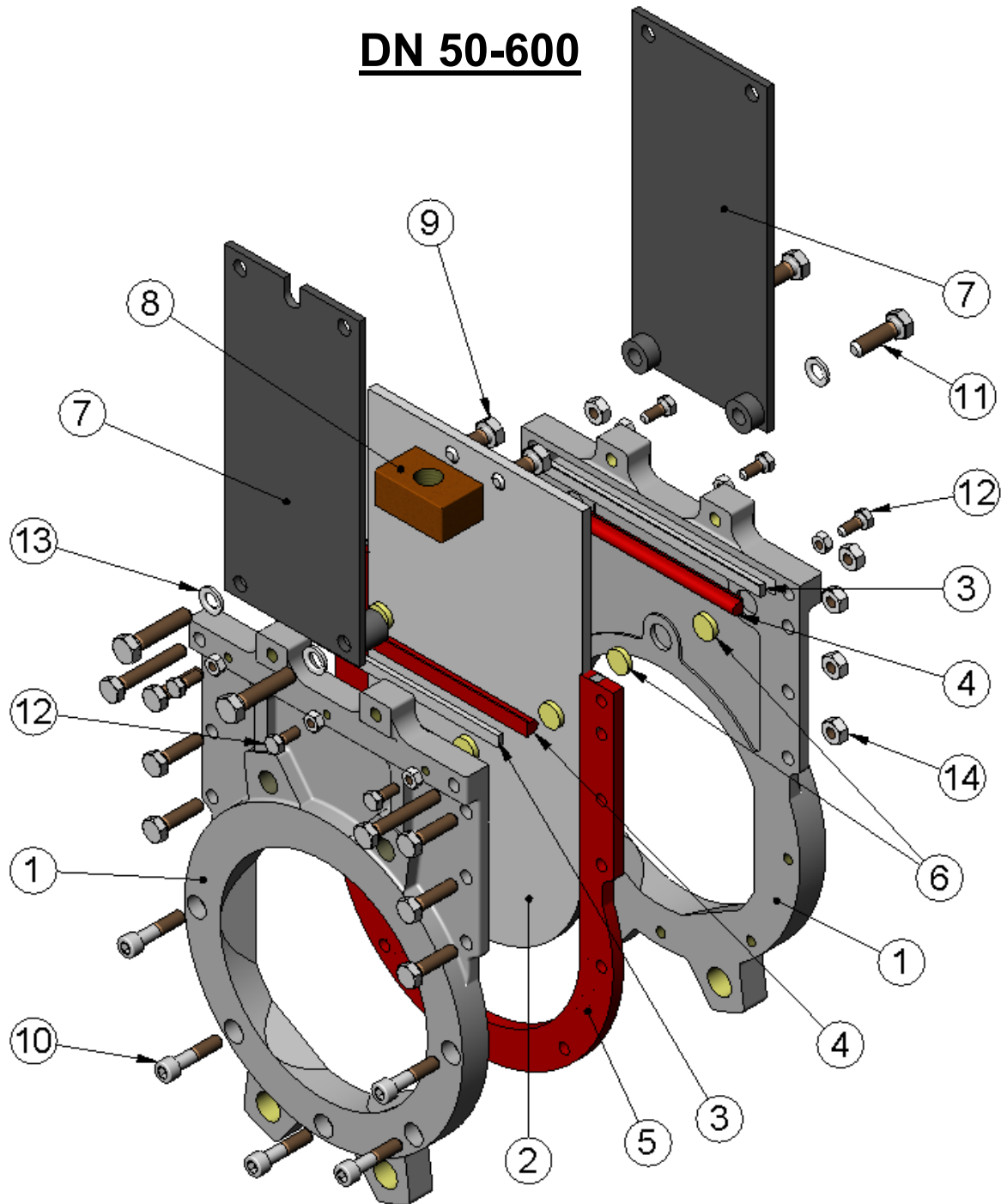
POS.	DESCRIPCION / DESCRIPTION	GGG50	CF8M
1	CUERPO / BODY	GGG50	CF8M
2	TAJADERA / KNIFE	AISI-304 / DUPLEX	AISI-316 / DUPLEX
3	EMPAQUETADURA / PACKING	SYNT + PTFE	SYNT + PTFE
4	PRENSAESTOPAS / PACKING GLAND	S275JR	AISI-316
5	CIERRE / SEAT	EPDM	EPDM
6	ASIENTO / GUIDE	---	RCH 1000
7	SOPORTE / SUPPORT	S275JR	S275JR
8	TUERCA HUSILLO / STEM NUT	BRONCE / BRONZE	BRONCE / BRONZE
9	TORNILLO / SCREW	A-2	A-4
10	TORNILLO ALLEN / ALLEN SCREW	A-2	A-4
11	TORNILLO / SCREW	5.6 ZINC	A-2
12	JUNTA TORICA / O-RING	NITRILO / NITRILE	NITRILO / NITRILE
13	ARANDELA / WASHER	A-2	A-4
14	TUERCA / NUT	A-2	A-4
15	ESPARRAGO / STUD	F-111 ZINC	AISI-316
16	ARANDELA / WASHER	ST ZINC	A-4
17	TUERCA AUTOBLOCANTE / SELF-LOCKING NUT	5.6 ZINC	A-4

**OBSERVACIONES: Otros materiales bajo consulta.**

*NOTE: Other materials under request.*



# DN 50-600



POS.	DESCRIPCION / DESCRIPTION	GGG50	CF8M
1	CUERPO / BODY	GGG50	CF8M
2	TAJADERA / KNIFE	AISI-304 / DUPLEX	AISI-316 / DUPLEX
3	LLANTA JUNTA / JOINT TYRE	AISI-304	AISI-316
4	JUNTA ESTOPERO / PACKING JOINT	EPDM	EPDM
5	CIERRE / SEAT	EPDM + ACERO / STEEL	EPDM + ACERO / STEEL
6	ASIENTO / GUIDE	---	RCH 1000
7	SOPORTE / SUPPORT	S275JR	S275JR
8	TUERCA HUSILLO / STEM NUT	BRONCE / BRONZE	BRONCE / BRONZE
9	TORNILLO / SCREW	A-2	A-4
10	TORNILLO ALLEN / ALLEN SCREW	A-2	A-4
11	TORNILLO / SCREW	5.6 ZINC	A-2
12	TORNILLO / SCREW	A-2	A-4
13	ARANDELA / WASHER	ST ZINC	A-2
14	TUERCA / NUT	A-2	A-4

**OBSERVACIONES:** Otros materiales bajo consulta.

NOTE: Other materials under request.

CONSTRUCCIONES METALICAS DE OBTURACION, S.L.



VÁLVULAS Y COMPUERTAS

Tel.: (+34) 902 40 80 50 - (+34) 943 67 33 99

Fax.: (+34) 902 40 80 51 - (+34) 943 67 24 40

MADRID - BARCELONA - TOLOSA (SPAIN)

E-mail: cmo@cmo.es Web: www.cmo.es