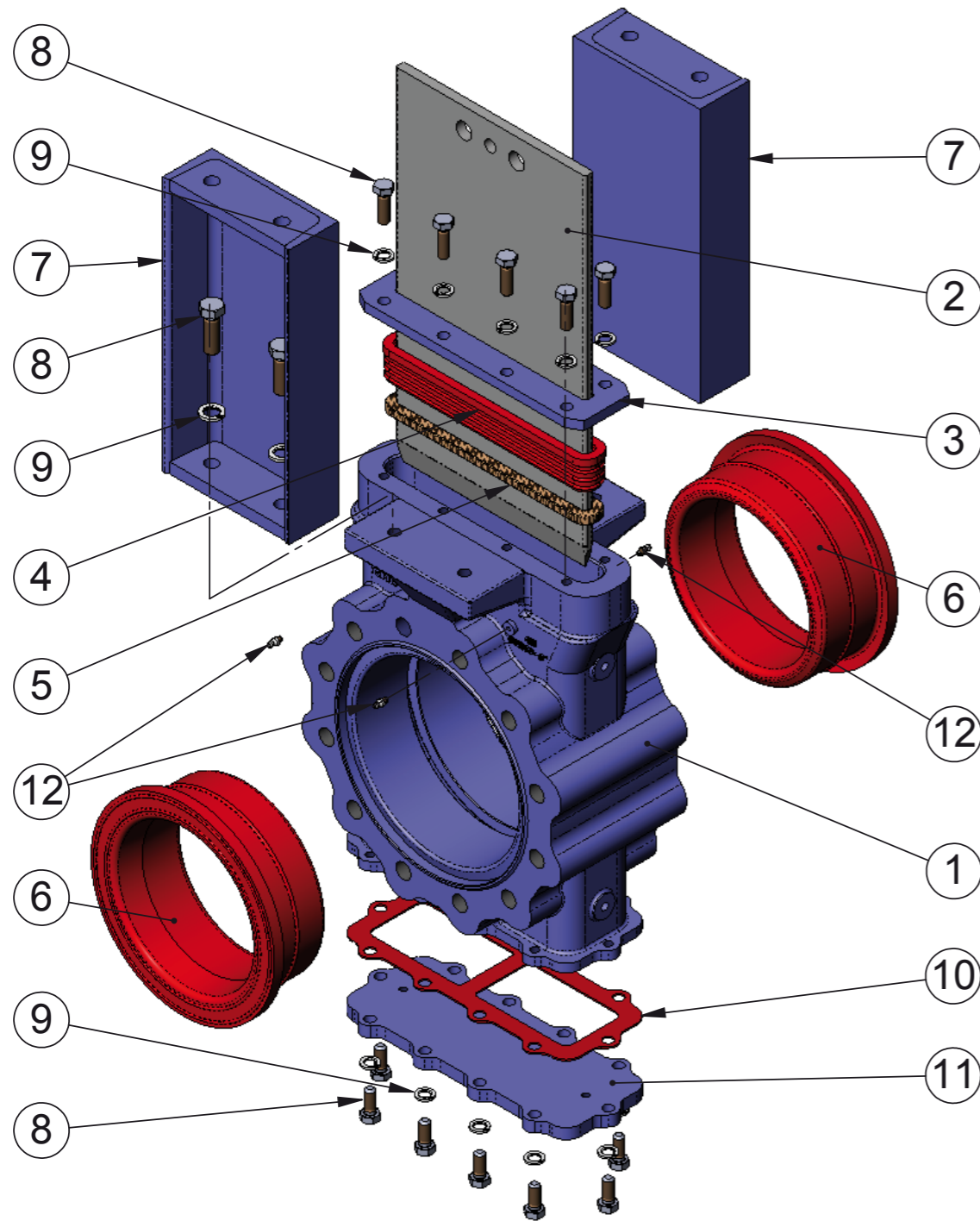


VALVULAS DE GUILLOTINA
PROGRAMA DE FABRICACION
KNIFE GATE VALVES
FABRICATION RANGE

SERIE - GH
GH - SERIES



POS.	DESCRIPCION / DESCRIPTION	GJS-500
1	CUERPO / BODY	GJS-500
2	TAJADERA / KNIFE	AISI-304 / DUPLEX
3	PRENSAESTOPAS / PACKING GLAND	S275JR
4	JUNTA / JOINT	CAUCHO NATURAL / NATURAL RUBBER
5	EMPAQUETADURA / PACKING	EMPAQUETADURA ENGRASADA / GREASED PACKING
6	MANGUITO / BUSH	CAUCHO NATURAL + F-1 / NATURAL RUBBER + F-1
7	SOPORTE / SUPPORT	S275JR
8	TORNILLO / SCREW	5.6 ZINC
9	ARANDELA / WASHER	ST ZINC
10	JUNTA TAPA / COVER JOINT	EPDM
11	TAPA INFERIOR / LOWER COVER	S275JR
12*	ENGRASADOR / GREASER	STEEL

* → Estos elementos son opcionales
These elements are optional

Otros materiales como: A216WCB, AISI316Ti, DUPLEX, 254SMO, Uranus B6, Ni-Resist, Ductile Ni-Resist,... están disponibles bajo consulta.

Other materials such as: A216WCB, AISI316Ti, DUPLEX, 254SMO, Uranus B6, Ni-Resist, Ductile Ni-Resist,... are available under request.

CONSTRUCCIONES METALICAS DE OBTURACION, S.L.



VÁLVULAS Y COMPUERTAS
VALVES & PENSTOCKS

Tel.: 902 40 80 50 / +34 943 67 33 99

Fax: 902 40 80 51 / +34 943 67 24 40

MADRID - BARCELONA - TOLOSA

E-mail: cmo@cmo.es Web: www.cmo.es



- UTILIZACION:

Válvula de tajadera bidireccional, para productos con gran carga de sólidos para arrastre de materiales procedentes de minería.

Altas presiones.

No presenta ni resaltes ni hendiduras en la tubería.

No necesita juntas entre las bridas por tenerla incorporada en el cuerpo.

Aplicación principal: tubería en línea, entre bridas.

- UTILIZATION:

Bidirectional knife gate valve, for very loaded products with solids, used for suspended matter in mining.

High pressures applications.

It does not present neither salient nor any split in the pipe.

It is not needed any joint between the flanges as it is incorporated in the body.

Main application: pipe in line, between flanges.

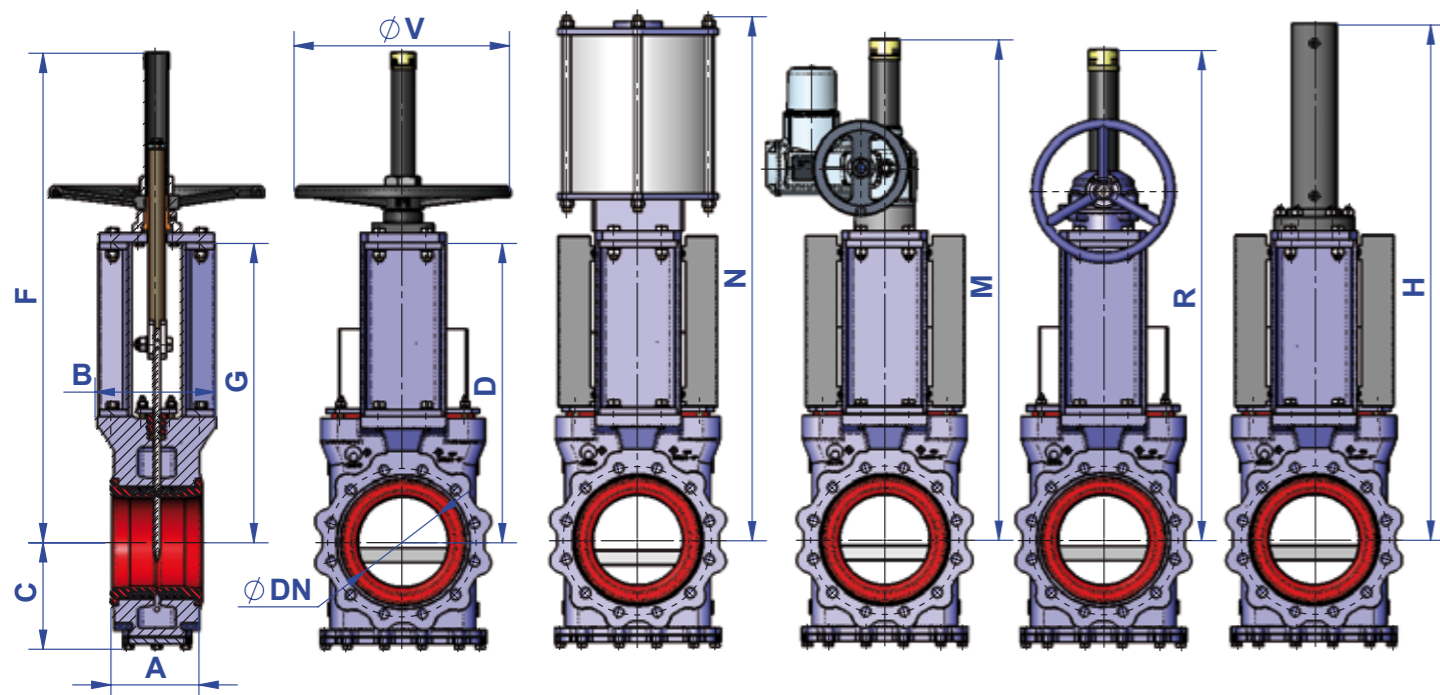


GESTION DE LA CALIDAD CERTIFICADA

QUALITY MANAGEMENT CERTIFIED



ACTUADORES / ACTUATORS



DIMENSIONES / DIMENSIONS

DN	ND	A	B	C	D	F	G	ØV	N	M	R	H
80	3"	176	109	125	362	529	401	225	593	715	662	582
100	4"	181	109	155	418	635	457	225	689	771	718	683
150	6"	184	126	193	529	819	582	325	901	882	857	857
200	8"	184	250	223	625	1022	744	450	1158	1110	1024	1059
250	10"	226	260	266	713	---	---	---	1370	1142	1142	1238
300	12"	242	275	296	812	---	---	---	1522	1361	1361	1398
350	14"	252	290	347	909	---	---	---	1667	1446	1465	1542
400	16"	287	320	376	1052	---	---	---	1785	1698	1698	1768
450	18"	311	350	401	1185	---	---	---	1875	1919	1919	2003
500	20"	373	350	436	1291	---	---	---	2160	2100	2100	2204
600	24"	362	350	515	1475	---	---	---	2410	2426	2426	2472
750	30"	413	375	625	1800	---	---	---	---	2980	---	3005
900	36"	467	400	710	2125	---	---	---	---	3435	---	3475

OBSERVACIONES: Otros tamaños bajo consulta. / NOTE: Other sizes under request.

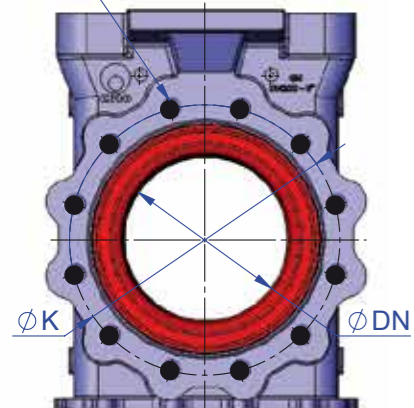
Cotas y dibujos sin compromiso. CMO S.L. se reserva, en cualquier momento, el derecho de modificarlos a discreción y sin previo aviso.

Dimensions and drawings without obligation. CMO S.L. reserves, at any moment, the right of their modification at its own discretion and without any previous notice.



● → Agujeros roscados ciegos / Blind tapped holes

Profundidad de rosca P
Screw depth P

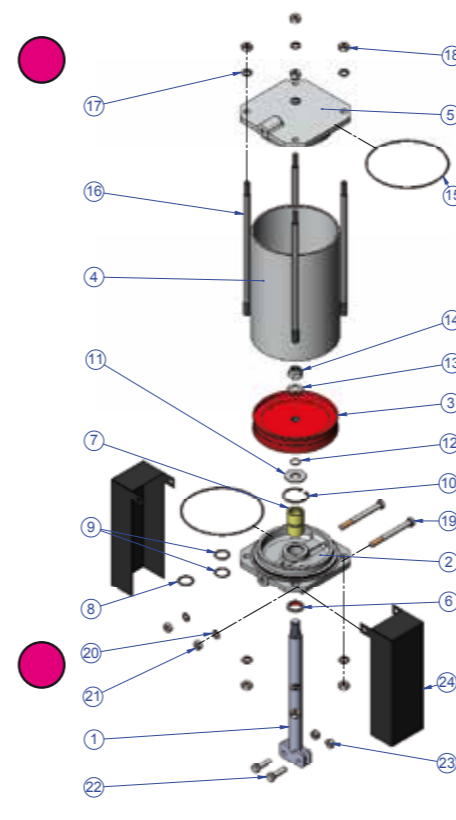


TALADRADO DE BRIDAS / BORING JOINT

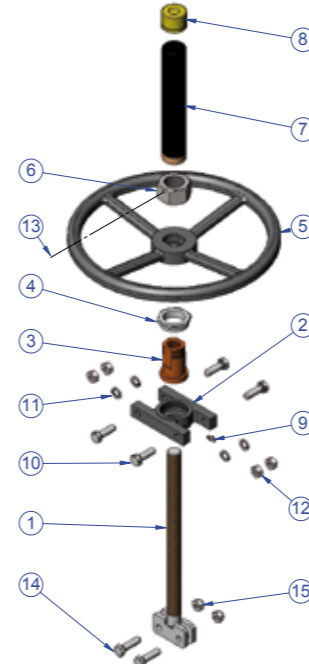
DN	EN 1092-2 PN-25				ANSI B16.5, clase 300						
	ΔP Kg/Cm ²	●	M Métrico	P	ØK	ND	ΔP psi	●	R UNC	P	ØK
80	21	8	M 16	20	160	3"	300	8	3/4"	0,79"	6,63"
100	21	8	M 20	23	190	4"	300	8	3/4"	0,91"	7,87"
150	21	8	M 24	27	250	6"	300	12	3/4"	1,06"	10,63"
200	21	12	M 24	32	310	8"	300	12	7/8"	1,26"	13"
250	21	12	M 27	35	370	10"	300	16	1"	1,38"	15,25"
300	21	16	M 27	35	430	12"	300	16	1 1/8"	1,38"	17,75"
350	21	16	M 30	38	490	14"	300	20	1 1/8"	1,50"	20,25"
400	21	16	M 33	43	550	16"	300	20	1 1/4"	1,69"	22,5"
450	21	20	M 33	48	600	18"	300	24	1 1/4"	1,89"	24,75"
500	21	20	M 33	55	660	20"	300	24	1 1/4"	2,17"	27"
600	21	20	M 36	55	770	24"	300	24	1 1/2"	2,17"	32"
750	21	--	--	--	--	30"	300	28	1 3/4"	2,17"	39,25"
900	21	28	M 45	60	1090	36"	300	32	2"	2,36"	46"

OBSERVACIONES: Otros tamaños y normas bajo consulta.

NOTE: Other sizes and standards under request.



NEUMATICO / PNEUMATIC		
POS.	DESCRIPCION / DESCRIPTION	MATERIAL
1	VASTAGO / STEM	AISI-304
2	TAPA SOPORTE / CYLINDER HEAD	ALUMINIO / ALUMINIUM
2	Ø CAMISA / CYLINDER > Ø200 →	GJS-400
3	EMBOLO / PISTON	S275JR + EPDM
4	CAMISA / CYLINDER TUBE	ALUMINIO / ALUMINIUM
5	TAPA SUPERIOR / CYLINDER CAP	ALUMINIO / ALUMINIUM
5	Ø CAMISA / CYLINDER > Ø200 →	GJS-400
6	RASCADOR / SCRAPER	NITRILO / NITRILE
7	CASQUILLO / SOCKET	NYLON
8	ANILLO TORICO EXT. / OUTSIDE O-RING	NITRILO / NITRILE
9	ANILLO TORICO INT. / INSIDE O-RING	NITRILO / NITRILE
10	CIR-CLIP	ACERO / STEEL
11	ARANDELA / WASHER	ST ZINC
12	ANILLO TORICO / O-RING	NITRILO / NITRILE
13	ARANDELA / WASHER	ST ZINC
14	TUERCA AUTOBLOCANTE / SELF-LOCKING NUT	5.6 ZINC
15	ANILLO TORICO / O-RING	NITRILO / NITRILE
16	TIRANTES / TIE ROD	F-114 ZINC
17	ARANDELA / WASHER	ST ZINC
18	TUERCA / NUT	5.6 ZINC
19	TORNILLO / SCREW	5.6 ZINC
20	ARANDELA / WASHER	ST ZINC
21	TUERCA / NUT	5.6 ZINC
22	TORNILLO / SCREW	A-2
23	TUERCA AUTOBLOCANTE / SELF-LOCKING NUT	A-2
24	PROTECCION / PROTECTION	S275JR



VOLANTE / HANDWHEEL		
POS.	DESCRIPCION / DESCRIPTION	MATERIAL
1	HUSILLO / SPINDLE	AISI-303
2	PUENTE / YOKE	GJL-250
3	TUERCA HUSILLO / SPINDLE NUT	BRONCE / BRONZE
4	TUERCA TOPE / BUTT NUT	F-111
5	VOLANTE / HANDWHEEL	GJS-450
6	TUERCA CAPERUZA / HOOD NUT	5.6 ZINC
7	CAPERUZA / HOOD	ST-37
8	TAPON PROTECCION / PLUG PROTECTION	HD-500
9	ENGRASADOR / GREASER	ACERO / STEEL
10	TORNILLO / SCREW	5.6 ZINC
11	ARANDELA / WASHER	ST ZINC
12	TUERCA / NUT	5.6 ZINC
13	PRISIONERO / SETSCREW	ACERO / STEEL
14	TORNILLO / SCREW	A-2
15	TUERCA AUTOBLOCANTE / SELF-LOCKING NUT	A-2

HIDRAULICO /
HYDRAULIC



MOTOR / MOTOR



REDUCTOR /
SPUR GEAR

