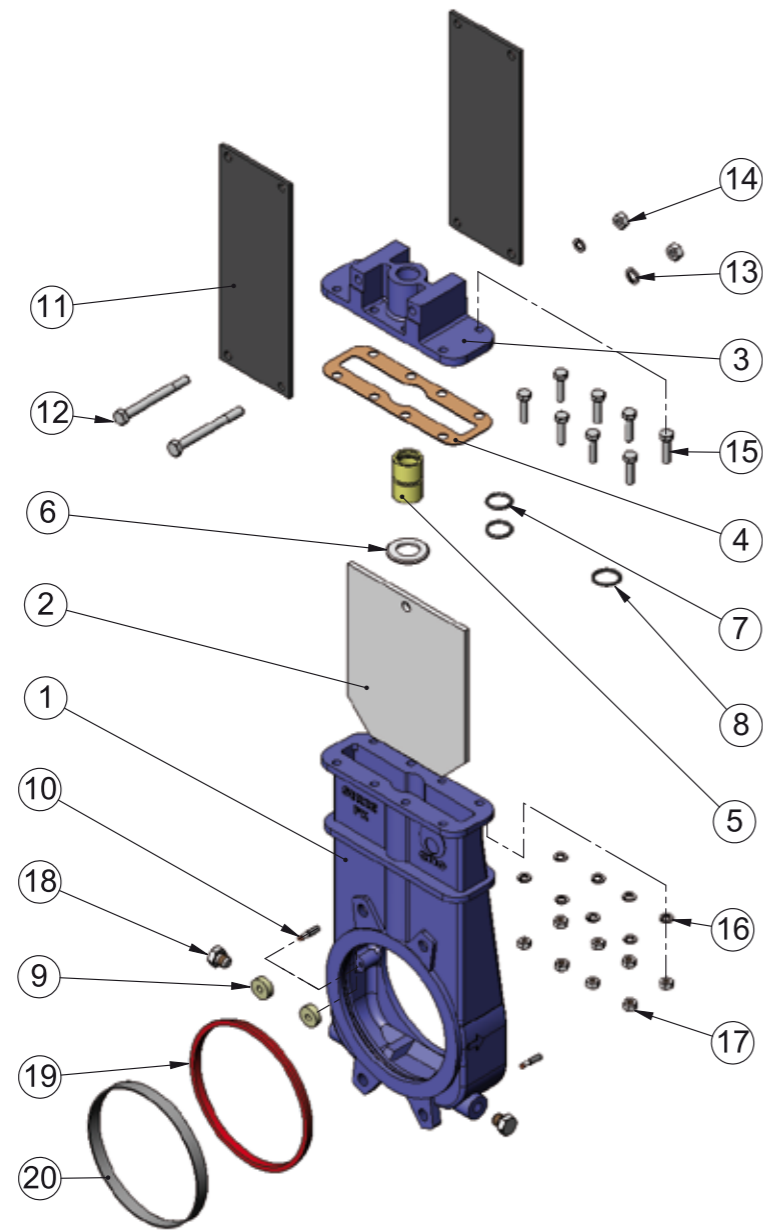


VALVULAS DE GUILLOTINA Serie-FK PROGRAMA DE FABRICACION

KNIFE GATE VALVES FK-Series FABRICATION RANGE



POS.	DESCRIPCION / DESCRIPTION	GJL 250	CF8M
1	CUERPO / BODY	GJL 250	CF8M
2	TAJADERA / KNIFE	AISI-304	AISI-316
3	TAPA / COVER	GJL 250	CF8M
4	JUNTA ASIENTO / BED JOINT	CARTON / CARDBOARD	CARTON / CARDBOARD
5	CASQUILLO / SOCKET	NYLON	NYLON
6	ARANDELA TOPE / BUTT WASHER	AISI-304	AISI-316
7	JUNTA TORICA INT. / INSIDE O-RING	NITRILO / NITRILE	NITRILO / NITRILE
8	JUNTA TORICA EXT. / OUTSIDE O-RING	NITRILO / NITRILE	NITRILO / NITRILE
9	ASIENTO / GUIDE	RCH 1000	RCH 1000
10	TOPE TAJADERA / KNIFE BUTT	F-111 + BRONCE / BRONZE	AISI-316 + BRONCE / BRONZE
11	SOPORTE / SUPPORT	S275JR	S275JR
12	TORNILLO / SCREW	5.6 ZINC	A-2
13	ARANDELA / WASHER	5.6 ZINC	A-2
14	TUERCA / NUT	5.6 ZINC	A-2
15	TORNILLO / SCREW	5.6 ZINC	A-4
16	ARANDELA / WASHER	5.6 ZINC	A-4
17	TUERCA / NUT	5.6 ZINC	A-4
18 *	TAPON ROSCADO / SCREW PLUG	A-2	A-4
19 *	CIERRE / SEAT	EPDM	EPDM
20 *	ANILLO / SOCKET	AISI-316	AISI-316

* → Estos elementos son opcionales
These elements are optional

CONSTRUCCIONES METALICAS DE OBTURACION, S.L.
VÁLVULAS Y COMPUERTAS
Tel.: (+34) 902 40 80 50 - (+34) 943 67 33 99
Fax: (+34) 902 40 80 51 - (+34) 943 67 24 40
MADRID - BARCELONA - TOLOSA (SPAIN)
E-mail: cmo@cmo.es Web: www.cmo.es



- UTILIZACIÓN:

Válvula de tajadera unidireccional para productos tóxicos, sólidos o gases.
Aplicación principal: salidas de silos.

- UTILIZATION:

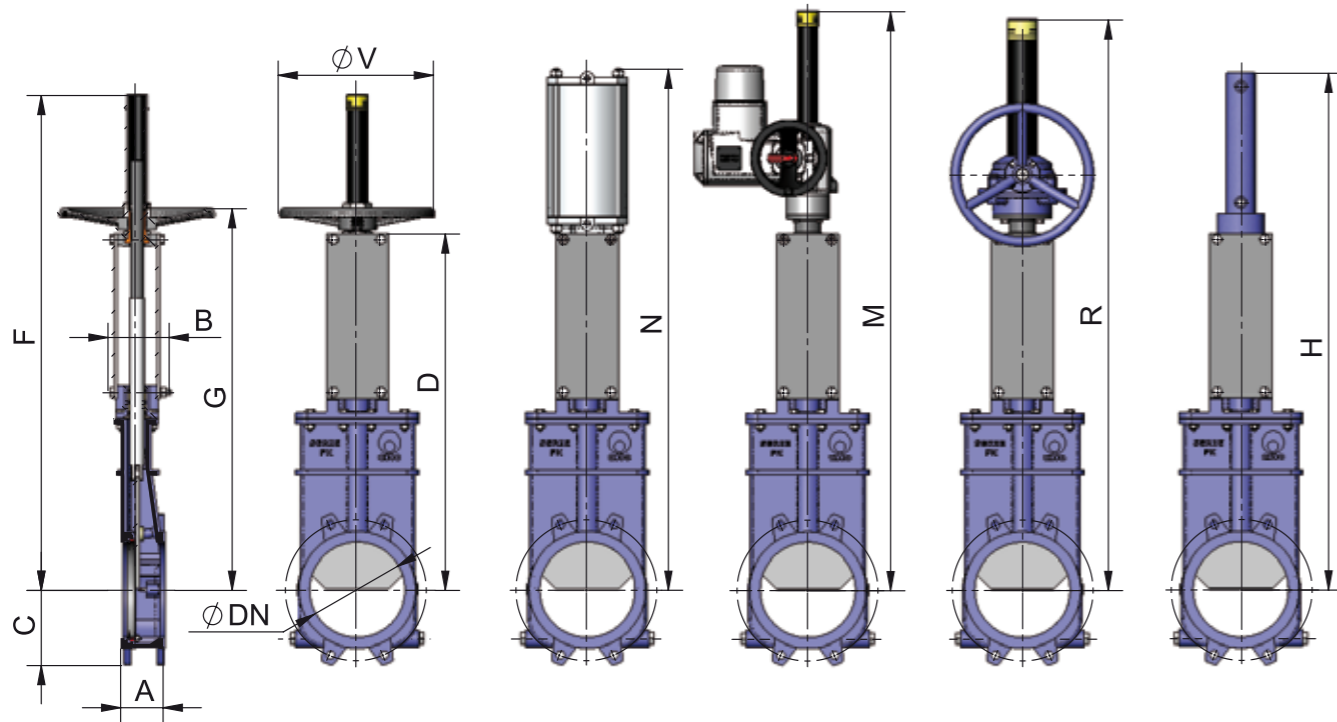
Unidirectional knife gate valve for toxic products, solids or gases.
Main application: silos exits.



GESTION DE LA CALIDAD CERTIFICADA
QUALITY MANAGEMENT CERTIFIED



ACTUADORES / ACTUATORS

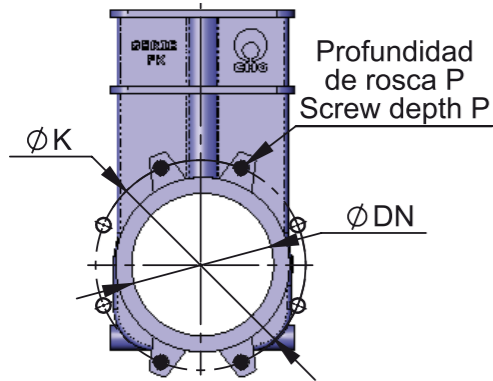


DIMENSIONES / DIMENSIONS

DN	A	B	C	D	F	G	ØV	N	M	R	H
50	60	91	61	323	492	362	225	498	674	620	539
65	60	91	68	362	531	401	225	550	713	659	593
80	64	91	91	404	573	443	225	608	755	701	670
100	64	91	104	453	622	492	225	680	804	750	739
125	70	101	118	511	730	550	225	774	862	808	827
150	76	101	130	574	793	613	225	866	921	871	906
200	89	118	158	745	1036	798	325	1090	1209	1164	1146
250	114	118	196	880	1271	933	325	1287	1344	1299	1331
300	114	118	230	1005	1396	1058	380	1462	1469	1424	1524
350	127	290	255	1141	1681	1250	460	1724	1648	1680	1720
400	140	290	290	1266	1806	1375	460	1899	1823	1805	1895
450	152	290	306	1393	2033	1502	460	2081	2160	2082	2112
500	152	290	340	1529	2169	1638	460	2267	2296	2218	2297
600	178	290	398	1782	2522	1891	460	2620	2549	2471	2650

OBSERVACIONES: Tamaños mayores bajo consulta. / NOTE: Bigger sizes under request.

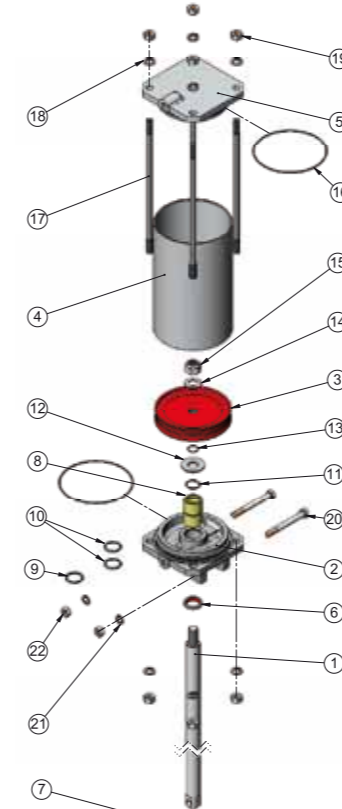
Cotas y dibujos sin compromiso. CMO S.L. se reserva, en cualquier momento, el derecho de modificarlos a discreción y sin previo aviso.
Dimensions and drawings without obligation. CMO S.L. reserves, at any moment, the right of their modification at its own discretion and without any previous notice.



- → Agujeros ciegos / Tapped holes
- → Agujeros pasantes / Through holes

DN	ΔP Kg/Cm ²	TALADRADO DE BRIDAS / BORING JOINT									
		DIN PN-10					ANSI-150				
		●	○	M Métrico	P	ØK	●	○	R UNC	P	ØK
50	3	4	-	M 16	8	125	4	-	5/8"	8	120,6
65	3	4	-	M 16	8	145	4	-	5/8"	8	139,7
80	3	4	4	M 16	10	160	4	-	5/8"	10	152,4
100	3	4	4	M 16	10	180	4	4	5/8"	10	190,5
125	3	4	4	M 16	10	210	4	4	3/4"	10	215,9
150	2,5	4	4	M 20	12	240	4	4	3/4"	12	241,3
200	2	4	4	M 20	12	295	4	4	3/4"	12	298,4
250	1,5	8	4	M 20	12	350	8	4	7/8"	12	361,9
300	1,5	8	4	M 20	12	400	8	4	7/8"	12	431,8
350	1,3	12	4	M 20	21	460	8	4	1"	21	476,2
400	1,3	12	4	M 24	20	515	12	4	1"	20	539,7
450	1	16	4	M 24	20	565	12	4	1 1/8"	20	577,8
500	1	16	4	M 24	19	620	16	4	1 1/8"	19	635
600	1	18	4	M 27	20	725	16	4	1 1/4"	20	749,3

OBSERVACIONES: Tamaños mayores bajo consulta. / NOTE: Bigger sizes under request.



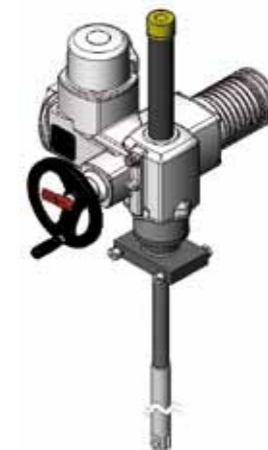
NEUMATICO / PNEUMATIC		
POS.	DESCRIPCION / DESCRIPTION	MATERIAL
1	VASTAGO / STEM	AISI-304
2	TAPA SOPORTE / CYLINDER HEAD	ALUMINIO / ALUMINIUM
2	Ø CAMISA / CYLINDER > Ø200 →	GJS 400
3	EMBOLO / PISTON	S275JR + EPDM
4	CAMISA / CYLINDER TUBE	ALUMINIO / ALUMINIUM
5	TAPA SUPERIOR / CYLINDER CAP	ALUMINIO / ALUMINIUM
5	Ø CAMISA / CYLINDER > Ø200 →	GJS 400
6	RASCADOR / SCRAPER	NITRILO / NITRILE
7	BULON / BOLT	AISI-304
8	CASQUILLO / SOCKET	NYLON
9	ANILLO TORICO EXT. / OUTSIDE O-RING	NITRILO / NITRILE
10	ANILLO TORICO INT. / INSIDE O-RING	NITRILO / NITRILE
11	CIR-CLIP	ACERO / STEEL
12	ARANDELA / WASHER	ST ZINC
13	ANILLO TORICO / O-RING	NITRILO / NITRILE
14	ARANDELA / WASHER	ST ZINC
15	TUERCA AUTOBLOCANTE / SELF-LOCKING NUT	5,6 ZINC
16	ANILLO TORICO / O-RING	NITRILO / NITRILE
17	TIRANTES / TIE ROD	F-114 ZINC
18	ARANDELA / WASHER	ST ZINC
19	TUERCA / NUT	5,6 ZINC
20	TORNILLO / SCREW	5,6 ZINC
21	ARANDELA / WASHER	ST ZINC
22	TUERCA / NUT	5,6 ZINC

VOLANTE / HANDWHEEL		
POS.	DESCRIPCION / DESCRIPTION	MATERIAL
1	HUSILLO / SPINDLE	AISI-303 + AISI-304
2	PUENTE / YOKE	GJL 250
3	TUERCA HUSILLO / SPINDLE NUT	BRONCE / BRONZE
4	TUERCA TOPE / BUTT NUT	F-111
5	VOLANTE / HANDWHEEL	GJS 400
6	TUERCA CAPERUZA / HOOD NUT	5,6 ZINC
7	CAPERUZA / HOOD	ST-37
8	TAPON PROTECCION / PLUG PROTECTION	HD-500
9	BULON / BOLT	AISI-304
10	ENGRASADOR / GREASER	ACERO / STEEL
11	TORNILLO / SCREW	5,6 ZINC
12	ARANDELA / WASHER	ST ZINC
13	TUERCA / NUT	5,6 ZINC
14	PRISIONERO / SETSCREW	ACERO / STEEL

HIDRAULICO / HYDRAULIC



MOTOR / MOTOR



REDUCTOR / SPUR GEAR

