

POS.	DESCRIPCION / DESCRIPTION	S275JR	AISI-304	AISI-316
1	CUERPO / BODY	S275JR	AISI-304	AISI-316
2	TAJADERA / KNIFE	AISI-304	AISI-304	AISI-316
3	PRENSAESTOPAS / PACKING GLAND	S275JR	AISI-304	AISI-316
4	EMPAQUETADURA / PACKING	SYNT + PTFE	SYNT + PTFE	SYNT + PTFE
5	DESIZADERA / SLIDE	AISI-316 + PTFE	AISI-316 + PTFE	AISI-316 + PTFE
6	ESPARRAGO / STUD	F-111 ZINC	A-2	A-4
7	TUERCA AUTOBLOCANTE / SELF-LOCKING NUT	5.6 ZINC	A-2	A-4
8*	CIERRE / SEAT	EPDM	EPDM	EPDM
9*	BRIDA JUNTA / JOINT FLANGE	AISI-304	AISI-304	AISI-316
10*	TORNILLO / SCREW	A-2	A-2	A-4
11*	TUERCA AUTOBLOCANTE / SELF-LOCKING NUT	A-2	A-2	A-4

* → Estos elementos son opcionales
These elements are optional

CONSTRUCCIONES METALICAS DE OBTURACION, S.L.



VÁLVULAS Y COMPUERTAS

Tel.: (+34) 902 40 80 50 - (+34) 943 67 33 99

Fax: (+34) 902 40 80 51 - (+34) 943 67 24 40

MADRID - BARCELONA - TOLOSA (SPAIN)

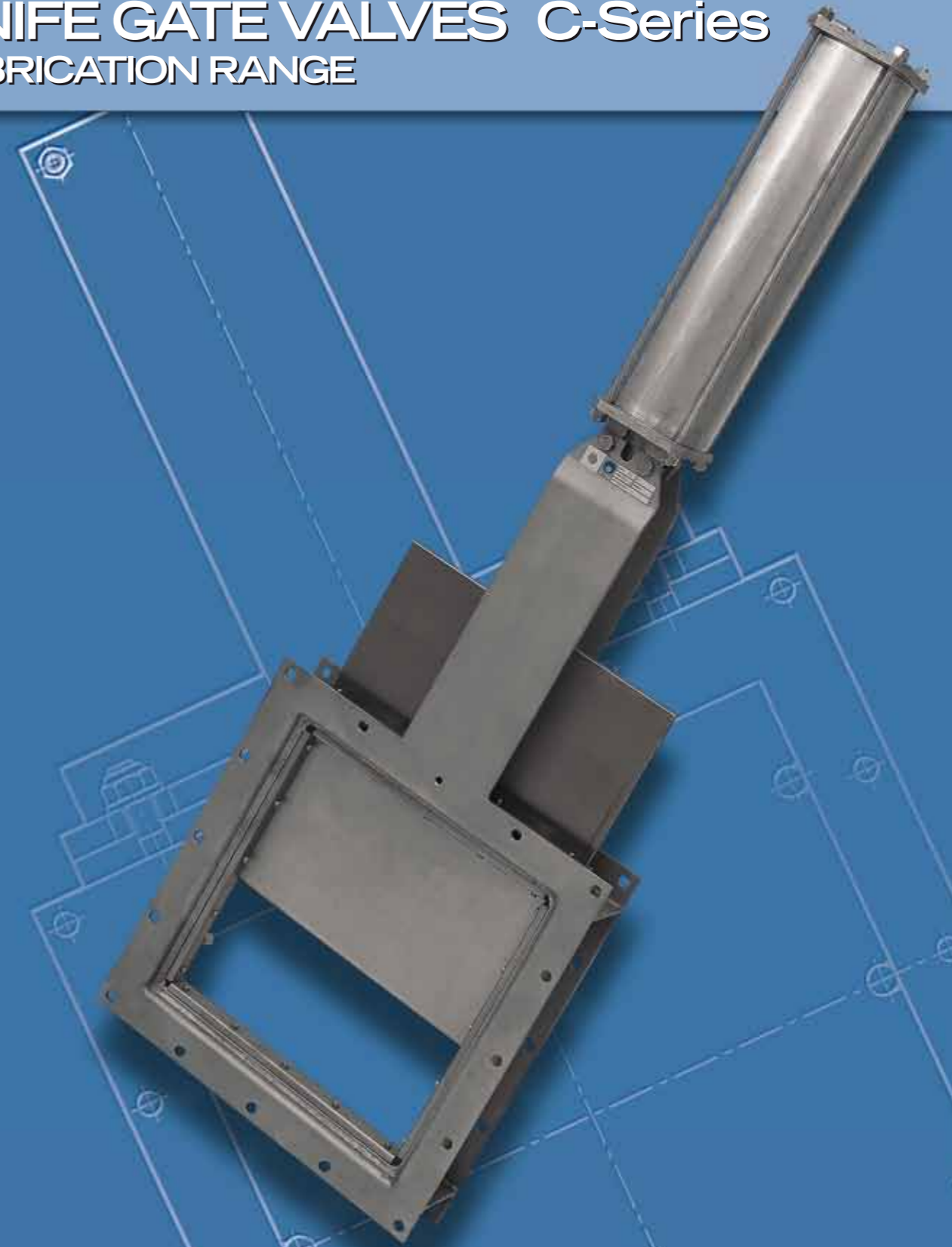
E-mail: cmo@cmo.es Web: www.cmo.es

VALVULAS DE GUILLOTINA Serie-C

PROGRAMA DE FABRICACION

KNIFE GATE VALVES C-Series

FABRICATION RANGE



- UTILIZACIÓN:

Válvula de tajadera unidireccional para productos muy cargados con sólidos o sólidos a granel.
Aplicación principal: entradas / salidas de silos.

- UTILIZATION:

Unidirectional knife gate valve for very loaded products with solids or in bulk solids.
Main application: silos entrances / exits.

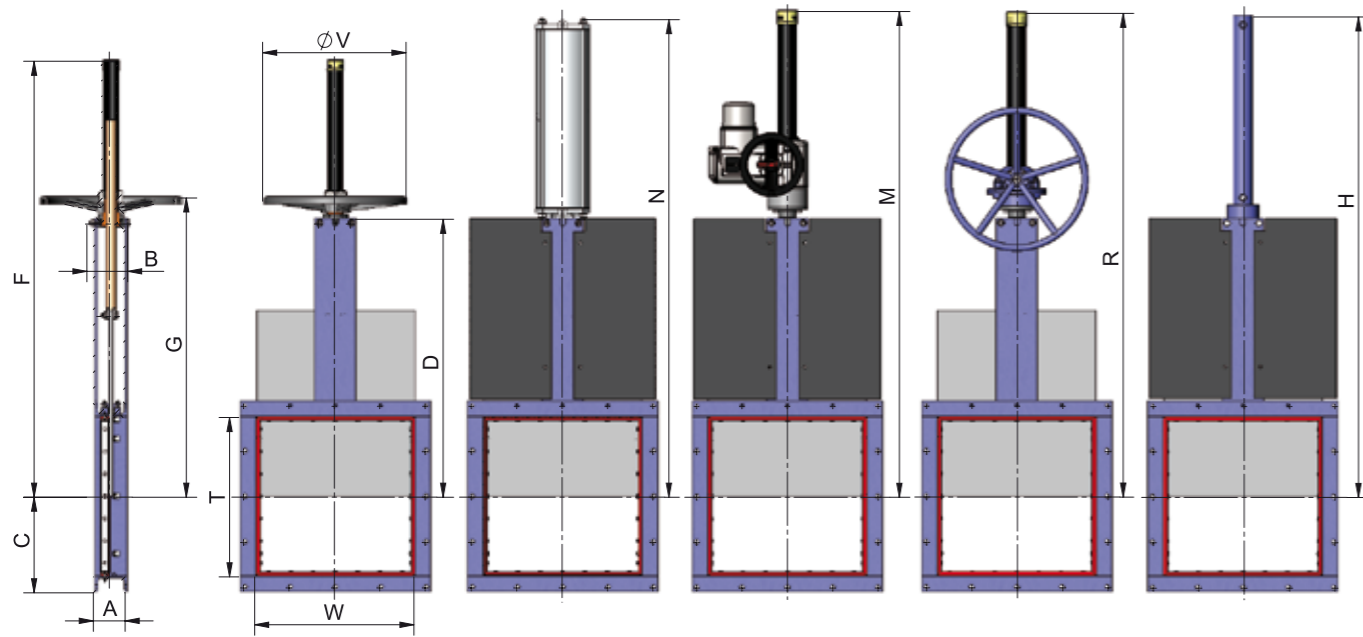


GESTION DE LA CALIDAD CERTIFICADA

QUALITY MANAGEMENT CERTIFIED



ACTUADORES / ACTUATORS



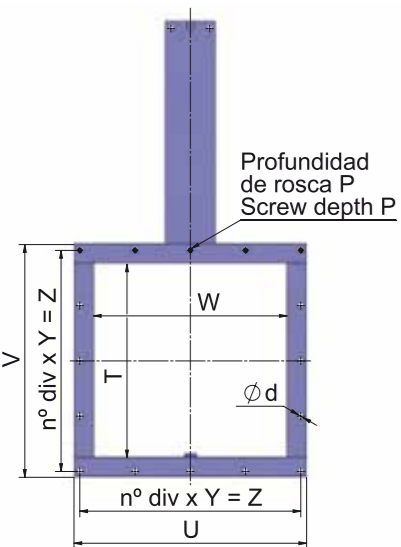
DIMENSIONES / DIMENSIONS

W x T	A	B	C	D	F	G	ØV	N	M	R	H
125x125	80	102	107,5	281,5	496	317	225	511	631	556	561
150x150	80	102	120	319	534	354	225	574	668	619	623
200x200	80	102	145	394	650	429	225	699	743	744	723
250x250	80	111	170	471	802	524	325	824	831	869	903
300x300	80	111	195	546	935	599	325	949	956	994	1028
350x350	100	116	225	621	1060	674	325	1074	1086	1124	1156
400x400	100	116	250	697	1185	749	325	1215	1211	1249	1286
450x450	100	128	275	785	1338	852	460	1351	1365	1384	1421
500x500	100	128	300	864	1465	929	460	1486	1492	1511	1558
550x550	100	128	325	939	1590	1004	460	1611	1617	1636	1683
600x600	100	128	350	1014	1715	1079	460	1736	1742	1761	1808
650x650	100	128	375	1089	1840	1154	460	1861	1867	1886	1933
700x700	120	148	405	1178	1981	1245	460	2014	2008	2027	2097
750x750	120	148	430	1253	2106	1320	460	2139	2133	2152	2222
800x800	120	148	455	1328	2231	1395	460	2264	2258	2277	2347
900x900	140	168	510	1478	2481	1545	460	2560	2508	2527	2597
1000x1000	140	168	560	1628	2746	1695	460	2810	2758	2777	2847
1200x1200	160	186	665	1929	---	---	---	3310	3229	3251	3387
1400x1400	160	218	765	2229	---	---	---	3877	3729	3751	3918

OBSERVACIONES: Tamaños mayores bajo consulta. / NOTE: Bigger sizes under request.

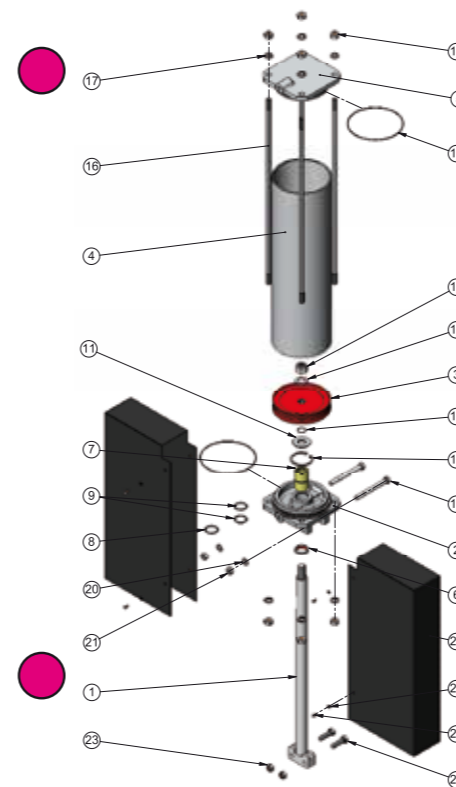
Cotas y dibujos sin compromiso. CMO S.L. se reserva, en cualquier momento, el derecho de modificarlos a discreción y sin previo aviso.
Dimensions and drawings without obligation. CMO S.L. reserves, at any moment, the right of their modification at its own discretion and without any previous notice.

● → Agujeros ciegos / Tapped holes ○ → Agujeros pasantes / Through holes

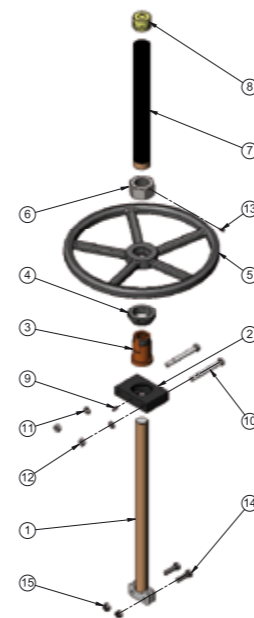


W x T	ΔP Kg/Cm ²	TALADRADO DE BRIDAS / BORING JOINT						
		●	○	M Métrico	P	Ød	U x V	n° div x Y = Z
125x125	0,6	3	5	M 10	8	12	215x215	2 x 92,5 = 185
150x150	0,6	3	5	M 10	8	12	240x240	2 x 105 = 210
200x200	0,6	3	5	M 10	8	12	290x290	2 x 130 = 260
250x250	0,6	3	5	M 10	8	12	340x340	2 x 155 = 310
300x300	0,6	4	8	M 10	8	12	390x390	3 x 120 = 360
350x350	0,6	4	8	M 12	8,5	14	450x450	3 x 140 = 420
400x400	0,6	5	11	M 12	8,5	14	500x500	4 x 117,5 = 470
450x450	0,6	5	11	M 12	8,5	14	550x550	4 x 130 = 520
500x500	0,6	5	11	M 12	8,5	14	600x600	4 x 142,5 = 570
550x550	0,6	5	11	M 12	8,5	14	650x650	4 x 155 = 620
600x600	0,6	5	11	M 12	8,5	14	700x700	4 x 167,5 = 670
650x650	0,6	5	11	M 12	8,5	14	750x750	4 x 180 = 720
700x700	0,6	6	14	M 12	9	14	810x810	5 x 155 = 775
750x750	0,6	6	14	M 12	9	14	860x860	5 x 166 = 830
800x800	0,6	6	14	M 12	9	14	910x910	5 x 175 = 875
900x900	0,6	7	17	M 12	10	14	1020x1020	6 x 162,5 = 975
1000x1000	0,6	8	20	M 12	10	14	1120x1120	7 x 155 = 1085
1200x1200	0,6	8	20	M 12	10,5	14	1320x1320	7 x 184,5 = 1291,5
1400x1400	0,6	8	20	M 12	10,5	14	1520x1520	7 x 213 = 1491

OBSERVACIONES: Tamaños mayores bajo consulta. / NOTE: Bigger sizes under request.

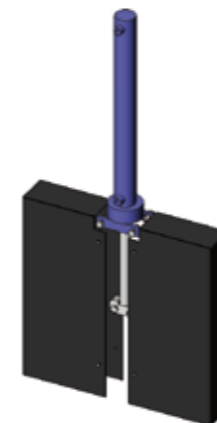


NEUMATICO / PNEUMATIC		
POS.	DESCRIPCION / DESCRIPTION	MATERIAL
1	VASTAGO / STEM	AISI-304
2	TAPA SOPORTE / CYLINDER HEAD	ALUMINIO / ALUMINIUM
2	Ø CAMISA / CYLINDER > Ø200 →	GJS 400
3	EMBOLO / PISTON	S275JR + EPDM
4	CAMISA / CYLINDER TUBE	ALUMINIO / ALUMINIUM
5	TAPA SUPERIOR / CYLINDER CAP	ALUMINIO / ALUMINIUM
5	Ø CAMISA / CYLINDER > Ø200 →	GJS 400
6	RASCADOR / SCRAPER	NITRILO / NITRILE
7	CASQUILLO / SOCKET	NYLON
8	ANILLO TORICO EXT. / OUTSIDE O-RING	NITRILO / NITRILE
9	ANILLO TORICO INT. / INSIDE O-RING	NITRILO / NITRILE
10	CIR-CLIP	ACERO / STEEL
11	ARANDELA / WASHER	ST ZINC
12	ANILLO TORICO / O-RING	NITRILO / NITRILE
13	ARANDELA / WASHER	ST ZINC
14	TUERCA AUTOBLOCANTE / SELF-LOCKING NUT	5,6 ZINC
15	ANILLO TORICO / O-RING	NITRILO / NITRILE
16	TIRANTES / TIE ROD	F-114 ZINC
17	ARANDELA / WASHER	ST ZINC
18	TUERCA / NUT	5,6 ZINC
19	TORNILLO / SCREW	5,6 ZINC
20	ARANDELA / WASHER	ST ZINC
21	TUERCA / NUT	5,6 ZINC
22	TORNILLO / SCREW	A-2
23	TUERCA AUTOBLOCANTE / SELF-LOCKING NUT	A-2
24	PROTECCION / PROTECTION	S275JR
25	ARANDELA / WASHER	ST ZINC
26	TORNILLO / SCREW	5,6 ZINC

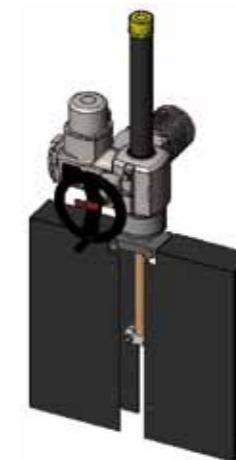


VOLANTE / HANDWHEEL		
POS.	DESCRIPCION / DESCRIPTION	MATERIAL
1	HUSILLO / SPINDLE	AISI-303
2	PUENTE / YOKE	GJL 250
3	TUERCA HUSILLO / SPINDLE NUT	BRONCE / BRONZE
4	TUERCA TOPE / BUTT NUT	F-111
5	VOLANTE / HANDWHEEL	GJS 400
6	TUERCA CAPERUZA / HOOD NUT	5,6 ZINC
7	CAPERUZA / HOOD	ST-37
8	TAPON PROTECCION / PLUG PROTECTION	HD-500
9	ENGRASADOR / GREASER	ACERO / STEEL
10	TORNILLO / SCREW	5,6 ZINC
11	ARANDELA / WASHER	ST ZINC
12	TUERCA / NUT	5,6 ZINC
13	PRISIONERO / SETSCREW	ACERO / STEEL
14	TORNILLO / SCREW	A-2
15	TUERCA AUTOBLOCANTE / SELF-LOCKING NUT	A-2

HIDRAULICO / HYDRAULIC



MOTOR / MOTOR



REDUCTOR / SPUR GEAR

